



Ecommerce Quarterly Benchmarks

Q2

20

22

—

Introduction

Monetate's quarterly eCommerce benchmark report includes average order value, page views, bounce rates, add-to-cart rates, cart abandonment rates, and conversion rates by device, source, channel, and more. To produce this proprietary data, we analyzed billions of customer sessions across 250+ retailer brands, across four regions: US, EMEA, GB, and Other. GB (Great Britain) includes England, Scotland, Wales, and Northern Ireland.

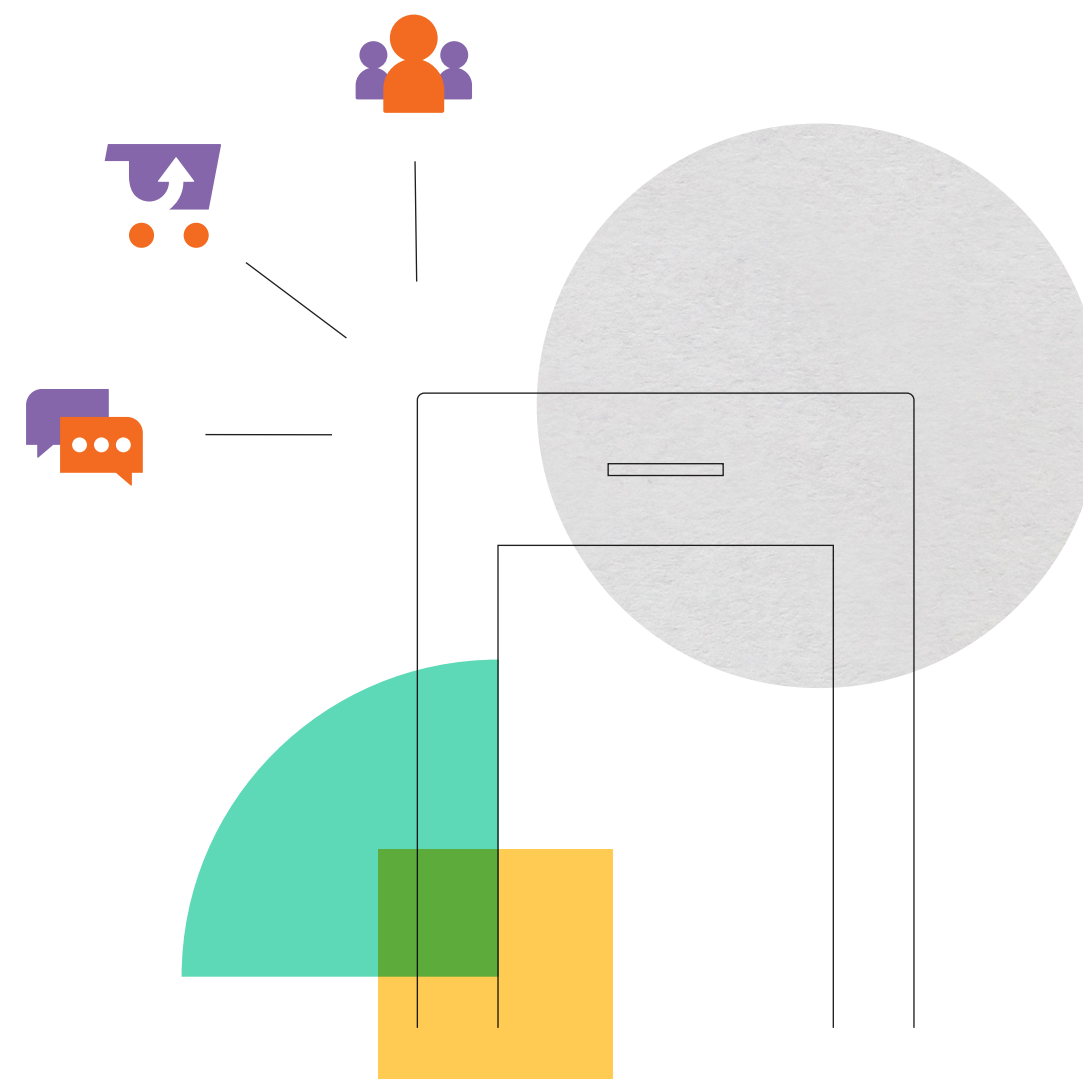
Benchmarks

Session Distribution	4
Bounce Rate	5
Average Page Views	8
Add-to-Cart	11
Abandoned Cart	14
Conversion Rate	17
Average Order Value	20



Q2 of 2022 saw some interesting trends, which will be important to continue to watch as we feel the impacts of inflation and price increases and how that plays out worldwide.

Although how shoppers use their devices to shop has stayed similar over the past quarter, we saw a slight decrease in Desktop shopping for Q2 2022. Also, over the past 12 months, shoppers using Tablets have dropped off quite a bit. But, despite the drop in Tablet usage, mobile shopping continues to drive most of the traffic, at 68% overall. Bounce rates are up slightly, by 4% over Q1 2022 and by 5% over the past 12 months. This increase in bounce rate is most pronounced in Asia/Africa/Latin America, which saw a 7% increase in bounce rate over the past year. By device, bounce rates continued to increase across the board over the past 12 months, particularly on Desktop and Tablets. Average page views are also slightly down, by roughly 8%. This is most noticeable in EMEA and Asia/Africa/Latin America. The US is the most stable over the past 12 months, although the most significantly down over Q1 of 2022. Regarding page views, the largest drop-off YoY comes from Direct traffic, which is down by 16%. Email-driven traffic is increasing and is up by 6%, although down by 7% from Q1. Conversion rates are also down by 8% over the past 12 months. GB remains flat, but EMEA is down 26%, the US down by 13%, and all other regions in this report are down by 15%. However, QoQ we see slight gains in conversion rates across the board. Average Order Value (AOV) is flat over the past 12 months, but up in non-European geographical regions. The increase in AOV over the past 12 months is seen most clearly in shoppers making purchases on Desktop, particularly in the US and Asia/Africa/Latin America. But the greatest increase in AOV over the past 12 months came from Social channels, illustrating the growing role of social commerce in retail.



Session Distribution

Session Distribution By Device

		Q2 2021	Q3 2021	Q4 2021	Q1 2022	Q2 2022	Change since Q1 2022	Change since Q2 2021
US	Tablet	1%	1%	1%	1%	1%	-8.57%	-10.80%
US	Mobile Phone	27%	29%	31%	28%	30%	4.82%	9.18%
US	Desktop	14%	15%	15%	15%	15%	-2.38%	3.21%
GB	Tablet	1%	1%	1%	1%	1%	-9.18%	-6.93%
GB	Mobile Phone	20%	17%	19%	20%	20%	0.75%	1.34%
GB	Desktop	5%	5%	6%	7%	7%	-3.70%	28.12%
EMEA	Tablet	1%	1%	0%	0%	0%	-5.16%	-54.56%
EMEA	Mobile Phone	12%	12%	9%	10%	9%	-7.30%	-27.42%
EMEA	Desktop	5%	6%	4%	4%	4%	-3.05%	-16.79%
Other	Tablet	0%	0%	0%	0%	0%	-6.66%	-17.24%
Other	Mobile Phone	9%	10%	9%	9%	10%	3.33%	2.51%
Other	Desktop	3%	3%	3%	3%	3%	-2.89%	-2.49%
Aggregate	Tablet	3%	3%	3%	3%	3%	-8.35%	-16.83%
Aggregate	Mobile Phone	69%	68%	68%	67%	68%	1.66%	-0.61%
Aggregate	Desktop	28%	29%	28%	30%	29%	-2.84%	3.55%

How shoppers have used their devices has stayed relatively similar over the past quarter, with a slight decrease in Desktop shopping. Tablet usage has dropped off quite a bit over the past 12 months. However, Mobile shopping is still driving the majority of traffic, at 68% overall.



Bounce Rate

Bounce Rate By Region							
	Q2 2021	Q3 2021	Q4 2021	Q1 2022	Q2 2022	Change since Q1 2022	Change since Q2 2021
US	44%	42%	42%	43%	47%	7.47%	6.02%
GB	33%	32%	33%	34%	33%	-1.63%	0.41%
EMEA	38%	40%	37%	40%	40%	0.25%	6.28%
Other	42%	42%	42%	43%	45%	3.00%	6.79%
Aggregate	40%	39%	39%	40%	42%	3.89%	5.10%

Bounce rates are up slightly, 4% since Q1 and 5% over the past 12 months. The increase is most pronounced in Asia/Africa/Latin America, which sees a 7% increase over the past year.



Bounce Rate By Device

		Q2 2021	Q3 2021	Q4 2021	Q1 2022	Q2 2022	Change since Q1 2022	Change since Q2 2021
US	Tablet	36%	37%	39%	39%	39%	0.06%	7.96%
US	Mobile Phone	43%	41%	41%	42%	47%	10.85%	7.24%
US	Desktop	45%	43%	44%	45%	47%	2.66%	4.16%
GB	Tablet	24%	25%	27%	27%	27%	1.55%	10.94%
GB	Mobile Phone	34%	32%	32%	31%	31%	-0.28%	-7.55%
GB	Desktop	26%	27%	32%	36%	36%	0.44%	37.13%
EMEA	Tablet	32%	36%	35%	40%	40%	-0.20%	24.67%
EMEA	Mobile Phone	37%	37%	35%	37%	37%	0.38%	-0.35%
EMEA	Desktop	41%	47%	43%	48%	47%	-0.46%	16.59%
Other	Tablet	43%	46%	45%	44%	43%	-2.85%	-0.35%
Other	Mobile Phone	42%	41%	41%	44%	46%	4.77%	8.68%
Other	Desktop	41%	43%	40%	43%	42%	-2.18%	3.16%
Aggregate	Tablet	32%	34%	35%	35%	35%	0.29%	8.54%
Aggregate	Mobile Phone	39%	38%	38%	38%	41%	6.18%	3.52%
Aggregate	Desktop	40%	41%	41%	43%	44%	1.23%	9.24%

Bounce rates have increased across the board over the past 12 months, mostly on Tablet and Desktop.



Bounce Rate By Source

	Q2 2021	Q3 2021	Q4 2021	Q1 2022	Q2 2022	Change since Q1 2022	Change since Q2 2021
Direct	44%	45%	46%	48%	51%	5.61%	17.17%
Social	45%	48%	46%	46%	46%	0.25%	2.27%
Email	34%	33%	31%	30%	35%	14.73%	3.91%
Search	29%	29%	29%	30%	30%	0.51%	1.99%
Unknown	40%	37%	37%	37%	38%	1.47%	-6.26%
Aggregate	39%	39%	38%	40%	41%	4.39%	5.46%

Direct bounce rates are up over 15% over the past 12 months, and email traffic has seen a 15% spike in bounce rate since Q1. Other traffic sources remain relatively stable.



Average Page Views

Average Page Views By Region							
	Q2 2021	Q3 2021	Q4 2021	Q1 2022	Q2 2022	Change since Q1 2022	Change since Q2 2021
US	6.6	7.6	7.7	7.1	6.5	-7.76%	-1.99%
GB	10.1	10.1	9.6	9.4	9.2	-1.56%	-8.55%
EMEA	8.4	8.1	7.9	7.5	7.1	-4.68%	-15.09%
Other	8.0	7.5	7.3	7.0	7.1	2.26%	-10.82%
Aggregate	8.0	8.3	8.2	7.8	7.4	-4.24%	-7.51%

Page views are slightly down across the board by roughly 8%, most noticeably in EMEA and Asia/Africa/Latin America.

The US is the most stable over the past 12 months, although the most significantly down over Q1.



Average Page Views By Device

		Q2 2021	Q3 2021	Q4 2021	Q1 2022	Q2 2022	Change since Q1 2022	Change since Q2 2021
US	Tablet	7.6	7.9	7.5	7.3	7.1	-2.70%	-6.38%
US	Mobile Phone	6.3	7.6	7.7	7.2	6.4	-10.48%	1.38%
US	Desktop	7.3	7.6	7.7	7.0	6.8	-2.94%	-7.01%
GB	Tablet	13.6	13.1	11.8	11.8	11.0	-6.43%	-19.03%
GB	Mobile Phone	8.8	9.1	8.8	8.8	8.9	0.96%	0.36%
GB	Desktop	15.1	14.1	12.7	11.6	10.8	-7.58%	-28.62%
EMEA	Tablet	10.3	10.1	9.5	8.5	7.9	-6.56%	-22.70%
EMEA	Mobile Phone	7.9	7.9	7.9	7.7	7.3	-5.30%	-7.55%
EMEA	Desktop	9.4	8.7	8.0	6.9	6.7	-3.06%	-28.61%
Other	Tablet	6.8	7.0	6.7	6.5	6.9	5.14%	0.25%
Other	Mobile Phone	7.6	7.1	7.0	6.8	6.8	0.22%	-10.40%
Other	Desktop	9.5	8.5	8.5	7.6	8.3	8.19%	-12.57%
Aggregate	Tablet	10.0	9.8	9.2	9.1	8.7	-4.40%	-13.00%
Aggregate	Mobile Phone	7.5	8.0	7.9	7.7	7.3	-5.19%	-2.67%
Aggregate	Desktop	9.4	9.0	8.9	8.1	7.9	-2.47%	-15.96%

Mobile page views in the US and GB are flat over the past 12 months; otherwise, page views are down across the board.



Average Page Views By Source

	Q2 2021	Q3 2021	Q4 2021	Q1 2022	Q2 2022	Change since Q1 2022	Change since Q2 2021
Direct	7.5	7.3	7.1	6.6	6.3	-5.30%	-16.08%
Social	4.7	4.7	4.9	4.6	4.5	-1.60%	-4.53%
Email	8.2	9.5	10.1	9.3	8.6	-7.15%	5.51%
Search	10.0	10.2	10.0	9.6	9.3	-3.23%	-7.43%
Unknown	8.9	9.0	8.6	8.6	8.3	-3.08%	-6.42%
Aggregate	8.0	8.3	8.2	7.8	7.4	-4.24%	-7.51%

The largest dropoff YoY is Direct traffic, down by 16%. Email-driven traffic is increasing, up by 6%, although it's down by 7% from Q1.



Add-to-Cart

Add-to-Cart By Region

	Q2 2021	Q3 2021	Q4 2021	Q1 2022	Q2 2022	Change since Q1 2022	Change since Q2 2021
US	12%	12%	14%	12%	11%	-4.75%	-5.02%
GB	18%	19%	18%	17%	17%	-4.28%	-5.61%
EMEA	12%	11%	10%	9%	9%	-2.48%	-24.95%
Other	9%	9%	9%	9%	9%	1.78%	3.71%
Aggregate	13%	13%	14%	13%	12%	-3.79%	-6.18%

Add-to-cart rates have seen a slight decline YoY, concentrated mainly in EMEA, which has seen a sizeable decrease since Q2 2021.



Add-to-Cart By Device

		Q2 2021	Q3 2021	Q4 2021	Q1 2022	Q2 2022	Change since Q1 2022	Change since Q2 2021
US	Tablet	12%	12%	13%	12%	11%	-3.30%	-5.75%
US	Mobile Phone	12%	12%	13%	12%	11%	-7.90%	-6.91%
US	Desktop	12%	12%	14%	11%	11%	0.42%	-1.45%
GB	Tablet	19%	18%	18%	17%	15%	-10.40%	-18.43%
GB	Mobile Phone	16%	18%	17%	17%	16%	-2.86%	2.38%
GB	Desktop	23%	22%	20%	18%	16%	-9.45%	-28.35%
EMEA	Tablet	14%	14%	9%	8%	8%	-5.14%	-44.73%
EMEA	Mobile Phone	11%	11%	10%	10%	9%	-5.56%	-19.66%
EMEA	Desktop	13%	12%	10%	8%	8%	1.45%	-35.08%
Other	Tablet	6%	6%	6%	7%	7%	4.57%	22.70%
Other	Mobile Phone	9%	8%	8%	9%	9%	-0.10%	3.65%
Other	Desktop	11%	10%	11%	10%	11%	7.11%	2.19%
Aggregate	Tablet	14%	14%	14%	13%	12%	-6.89%	-13.53%
Aggregate	Mobile Phone	13%	13%	13%	13%	12%	-4.85%	-3.56%
Aggregate	Desktop	14%	13%	14%	12%	12%	-2.33%	-12.79%

The decline in add-to-cart rates is most pronounced on Tablet and Desktop, and most noticeable in GB and EMEA. Add-to-cart rates are improving YoY in non-US/ Europe geos.



Add-to-Cart By Source

	Q2 2021	Q3 2021	Q4 2021	Q1 2022	Q2 2022	Change since Q1 2022	Change since Q2 2021
Direct	12%	12%	13%	11%	11%	-4.28%	-10.14%
Social	9%	9%	9%	9%	8%	-6.64%	-5.22%
Email	11%	12%	14%	13%	12%	-8.01%	6.20%
Search	12%	12%	12%	11%	11%	-1.16%	-5.84%
Unknown	19%	18%	19%	18%	18%	-2.75%	-7.44%
Aggregate	13%	13%	14%	13%	12%	-3.79%	-6.18%

Add-to-cart rates have declined over the past 12 months, from nearly every source, with the exception of email, which is up by 6% (but down by 8% from Q1 2022).

There are decreases across the board QoQ.



Abandoned Cart

Abandoned Cart By Region

	Q2 2021	Q3 2021	Q4 2021	Q1 2022	Q2 2022	Change since Q1 2022	Change since Q2 2021
US	78%	79%	79%	81%	80%	-0.84%	2.90%
GB	76%	77%	77%	77%	75%	-2.43%	-1.43%
EMEA	82%	82%	82%	84%	82%	-2.31%	0.44%
Other	84%	85%	85%	88%	87%	-0.63%	3.46%
Aggregate	79%	79%	79%	80%	79%	-1.47%	0.81%

Abandon cart rates are relatively stable.



Abandoned Cart By Device

		Q2 2021	Q3 2021	Q4 2021	Q1 2022	Q2 2022	Change since Q1 2022	Change since Q2 2021
US	Tablet	70%	72%	75%	76%	75%	-1.20%	6.25%
US	Mobile Phone	83%	83%	83%	85%	84%	-0.48%	1.92%
US	Desktop	69%	71%	73%	74%	72%	-1.71%	5.05%
GB	Tablet	72%	71%	73%	75%	72%	-3.62%	0.75%
GB	Mobile Phone	79%	79%	79%	79%	78%	-2.25%	-1.86%
GB	Desktop	70%	70%	71%	71%	67%	-5.17%	-3.61%
EMEA	Tablet	78%	79%	77%	81%	81%	-0.95%	2.62%
EMEA	Mobile Phone	86%	86%	86%	87%	86%	-0.88%	0.85%
EMEA	Desktop	74%	75%	75%	76%	73%	-4.74%	-2.26%
Other	Tablet	77%	78%	79%	81%	83%	2.74%	7.89%
Other	Mobile Phone	88%	88%	88%	90%	90%	-0.60%	2.67%
Other	Desktop	77%	78%	78%	81%	80%	-0.86%	4.78%
Aggregate	Tablet	72%	73%	74%	76%	74%	-2.63%	2.78%
Aggregate	Mobile Phone	82%	83%	82%	83%	82%	-1.20%	0.00%
Aggregate	Desktop	71%	72%	73%	74%	72%	-2.70%	1.41%

Abandon cart rates are flat, with slight variability seen in the US and non-US/ European regions.



Abandoned Cart By Source

	Q2 2021	Q3 2021	Q4 2021	Q1 2022	Q2 2022	Change since Q1 2022	Change since Q2 2021
Direct	78%	79%	79%	80%	79%	-0.77%	1.91%
Social	89%	90%	89%	90%	91%	0.05%	2.28%
Email	82%	82%	82%	85%	84%	-1.14%	2.63%
Search	74%	76%	76%	77%	76%	-1.30%	2.71%
Unknown	80%	80%	80%	81%	78%	-2.85%	-1.95%
Aggregate	79%	79%	79%	80%	79%	-1.47%	0.81%



Conversion Rate

Conversion Rate By Region							
	Q2 2021	Q3 2021	Q4 2021	Q1 2022	Q2 2022	Change since Q1 2022	Change since Q2 2021
US	2.6%	2.5%	2.8%	2.3%	2.3%	0.62%	-12.76%
GB	4.2%	4.3%	4.1%	4.0%	4.1%	3.55%	-1.23%
EMEA	2.2%	2.1%	1.7%	1.5%	1.6%	9.41%	-26.45%
Other	1.4%	1.3%	1.3%	1.1%	1.2%	7.03%	-14.56%
Aggregate	2.8%	2.7%	2.8%	2.5%	2.6%	2.74%	-8.14%

Conversion rates are down 8% over the past 12 months across the board. GB is flat, but EMEA is down 26%, the US is down 13%, and everywhere else is down 15%.

However, QoQ we see slight gains across the board.



Conversion Rate By Device

		Q2 2021	Q3 2021	Q4 2021	Q1 2022	Q2 2022	Change since Q1 2022	Change since Q2 2021
US	Tablet	3%	3%	3%	3%	3%	1.17%	-18.96%
US	Mobile Phone	2%	2%	2%	2%	2%	-3.11%	-12.48%
US	Desktop	4%	3%	4%	3%	3%	7.20%	-11.03%
GB	Tablet	5%	5%	5%	4%	4%	-0.70%	-19.94%
GB	Mobile Phone	3%	4%	4%	3%	4%	5.55%	9.57%
GB	Desktop	7%	7%	6%	5%	5%	1.99%	-22.36%
EMEA	Tablet	3%	3%	2%	2%	1%	-1.26%	-49.98%
EMEA	Mobile Phone	2%	2%	1%	1%	1%	0.03%	-23.78%
EMEA	Desktop	3%	3%	2%	2%	2%	17.03%	-30.70%
Other	Tablet	1%	1%	1%	1%	1%	-7.44%	-9.66%
Other	Mobile Phone	1%	1%	1%	1%	1%	6.03%	-15.30%
Other	Desktop	2%	2%	2%	2%	2%	12.19%	-12.69%
Aggregate	Tablet	4%	4%	4%	3%	3%	-0.68%	-18.91%
Aggregate	Mobile Phone	2%	2%	2%	2%	2%	1.73%	-3.14%
Aggregate	Desktop	4%	4%	4%	3%	3%	6.21%	-14.46%

Declines in conversion are more pronounced on Desktop and Tablet.



Conversion Rate By Source

	Q2 2021	Q3 2021	Q4 2021	Q1 2022	Q2 2022	Change since Q1 2022	Change since Q2 2021
Direct	3%	3%	3%	2%	2%	-0.42%	-15.52%
Social	1%	1%	1%	1%	1%	-5.11%	-20.08%
Email	2%	2%	2%	2%	2%	-2.16%	-6.18%
Search	3%	3%	3%	3%	3%	3.87%	-12.72%
Unknown	4%	4%	4%	4%	4%	9.55%	0.82%
Aggregate	3%	3%	3%	2%	3%	2.74%	-8.14%

The biggest declines in conversion come from Social, Direct, and Search traffic over the past 12 months.



Average Order Value

Average Order Value By Region

	Q2 2021 (USD)	Q3 2021 (USD)	Q4 2021 (USD)	Q1 2022 (USD)	Q2 2022 (USD)	Change since Q1 2022 (USD)	Change since Q2 2021 (USD)
US	\$119.64	\$117.96	\$125.31	\$123.03	\$131.14	6.60%	9.61%
GB	\$103.38	\$100.46	\$109.47	\$105.11	\$99.69	-5.16%	-3.57%
EMEA	\$131.75	\$132.56	\$119.63	\$119.12	\$125.96	5.74%	-4.39%
Other	\$115.44	\$116.71	\$124.16	\$119.88	\$126.17	5.25%	9.29%
Aggregate	\$114.78	\$113.33	\$118.71	\$114.64	\$116.50	1.62%	1.50%

	Q2 2021 (BP)	Q3 2021 (BP)	Q4 2021 (BP)	Q1 2022 (BP)	Q2 2022 (BP)	Change since Q1 2022 (BP)	Change since Q2 2021 (BP)
US	£85.90	£85.56	£93.22	£91.80	£104.36	13.67%	21.49%
GB	£74.23	£72.87	£81.38	£78.41	£79.30	1.14%	6.83%
EMEA	£94.55	£96.15	£88.82	£88.82	£100.25	12.87%	6.02%
Other	£82.78	£84.56	£92.14	£89.40	£100.07	11.93%	20.89%
Aggregate	£82.40	£82.20	£88.26	£85.53	£92.67	8.35%	12.47%

AOV is flat over the past 12 months, but up in non-European geos.



Average Order Value By Device (USD)

		Q2 2021	Q3 2021	Q4 2021	Q1 2022	Q2 2022	Change since Q1 2022	Change since Q2 2021
US	Tablet	\$86.57	\$84.63	\$97.40	\$90.01	\$95.51	6.12%	10.33%
US	Mobile Phone	\$101.30	\$99.86	\$109.62	\$102.28	\$112.29	9.79%	10.85%
US	Desktop	\$143.34	\$142.01	\$146.99	\$150.60	\$155.75	3.42%	8.65%
GB	Tablet	\$103.23	\$99.52	\$107.81	\$106.39	\$102.11	-4.02%	-1.08%
GB	Mobile Phone	\$94.86	\$91.65	\$99.75	\$91.60	\$86.28	-5.81%	-9.04%
GB	Desktop	\$118.78	\$117.92	\$127.88	\$130.07	\$126.49	-2.76%	6.49%
EMEA	Tablet	\$135.02	\$131.39	\$112.95	\$117.87	\$124.36	5.51%	-7.89%
EMEA	Mobile Phone	\$104.70	\$106.87	\$101.90	\$95.30	\$94.92	-0.40%	-9.33%
EMEA	Desktop	\$163.13	\$161.29	\$145.08	\$153.09	\$167.04	9.11%	2.40%
Other	Tablet	\$102.32	\$102.43	\$111.38	\$96.15	\$94.19	-2.04%	-7.95%
Other	Mobile Phone	\$97.20	\$98.97	\$100.09	\$101.05	\$104.37	3.29%	7.38%
Other	Desktop	\$137.32	\$138.18	\$152.45	\$143.54	\$155.37	8.24%	13.15%
Aggregate	Tablet	\$100.57	\$97.65	\$103.67	\$99.76	\$99.92	0.16%	-0.65%
Aggregate	Mobile Phone	\$98.74	\$97.21	\$104.33	\$96.52	\$97.72	1.24%	-1.03%
Aggregate	Desktop	\$138.03	\$137.49	\$141.04	\$142.63	\$146.05	2.39%	5.81%

The increase in AOV over the past 12 months can be seen most clearly in Desktop purchases, particularly in the US and Asia/Africa/Latin America.



Average Order Value By Device (BP)

		Q2 2021	Q3 2021	Q4 2021	Q1 2022	Q2 2022	Change since Q1 2022	Change since Q2 2021
US	Tablet	£62.18	£61.38	£72.40	£67.11	£75.95	13.16%	22.15%
US	Mobile Phone	£72.75	£72.42	£81.61	£76.33	£89.38	17.10%	22.85%
US	Desktop	£102.89	£103.02	£109.27	£112.38	£123.92	10.27%	20.44%
GB	Tablet	£74.15	£72.19	£80.08	£79.32	£81.15	2.30%	9.43%
GB	Mobile Phone	£68.11	£66.48	£74.18	£68.33	£68.62	0.42%	0.76%
GB	Desktop	£85.28	£85.54	£95.04	£97.04	£100.64	3.71%	18.01%
EMEA	Tablet	£96.93	£95.29	£83.65	£87.86	£98.89	12.56%	2.02%
EMEA	Mobile Phone	£75.18	£77.51	£75.72	£71.01	£75.50	6.33%	0.44%
EMEA	Desktop	£117.02	£117.00	£107.61	£114.23	£133.00	16.43%	13.65%
Other	Tablet	£73.46	£74.29	£82.70	£71.69	£74.72	4.22%	1.71%
Other	Mobile Phone	£69.68	£71.67	£74.31	£75.35	£82.72	9.77%	18.70%
Other	Desktop	£98.48	£100.16	£113.08	£107.06	£123.31	15.18%	25.22%
Aggregate	Tablet	£72.23	£70.82	£77.02	£74.38	£79.42	6.78%	9.95%
Aggregate	Mobile Phone	£70.90	£70.50	£77.62	£72.01	£77.73	7.95%	9.64%
Aggregate	Desktop	£99.07	£99.73	£104.80	£106.42	£116.19	9.18%	17.28%



Average Order Value By Source

	Q2 2021 (USD)	Q3 2021 (USD)	Q4 2021 (USD)	Q1 2022 (USD)	Q2 2022 (USD)	Change since Q1 2022 (USD)	Change since Q2 2021 (USD)
Direct	\$114.23	\$114.23	\$120.23	\$118.30	\$121.05	2.32%	5.97%
Social	\$74.64	\$74.76	\$81.12	\$77.32	\$86.21	11.50%	15.50%
Email	\$104.31	\$98.56	\$107.61	\$105.14	\$109.65	4.29%	5.12%
Search	\$101.70	\$98.80	\$103.69	\$101.39	\$103.32	1.90%	1.60%
Unknown	\$134.14	\$131.57	\$137.40	\$127.19	\$126.73	-0.36%	-5.52%
Aggregate	\$114.78	\$113.33	\$118.71	\$114.64	\$116.50	1.62%	1.50%

	Q2 2021 (BP)	Q3 2021 (BP)	Q4 2021 (BP)	Q1 2022 (BP)	Q2 2022 (BP)	Change since Q4 2021 (BP)	Change since Q1 2021 (BP)
Direct	£82.01	£82.85	£89.37	£88.26	£96.31	9.12%	17.44%
Social	£53.58	£54.18	£60.32	£57.62	£68.59	19.02%	28.00%
Email	£74.90	£71.49	£80.05	£78.40	£87.20	11.23%	16.42%
Search	£72.99	£71.67	£77.13	£75.65	£82.19	8.64%	12.60%
Unknown	£96.30	£95.43	£102.15	£94.90	£100.80	6.22%	4.68%
Aggregate	£82.40	£82.20	£88.26	£85.53	£92.67	8.35%	12.47%

The greatest increase in AOV over the past 12 months came from Social.



Powerful Personalization

Monetate Personalization, the leading and most experienced personalization solution on the market, empowers marketers to delight customers by enabling everything from quick one-off content changes to complex personalization across the entire customer journey. Monetate is proud to be recognized as the No. 1 personalization provider in Digital Commerce 360's Top 1000 and is the winner of three TrustRadius Top Rated awards for A/B Testing, Real-time Interaction, and eCommerce Personalization.

monetate.com  <https://www.linkedin.com/company/monetate-/>

